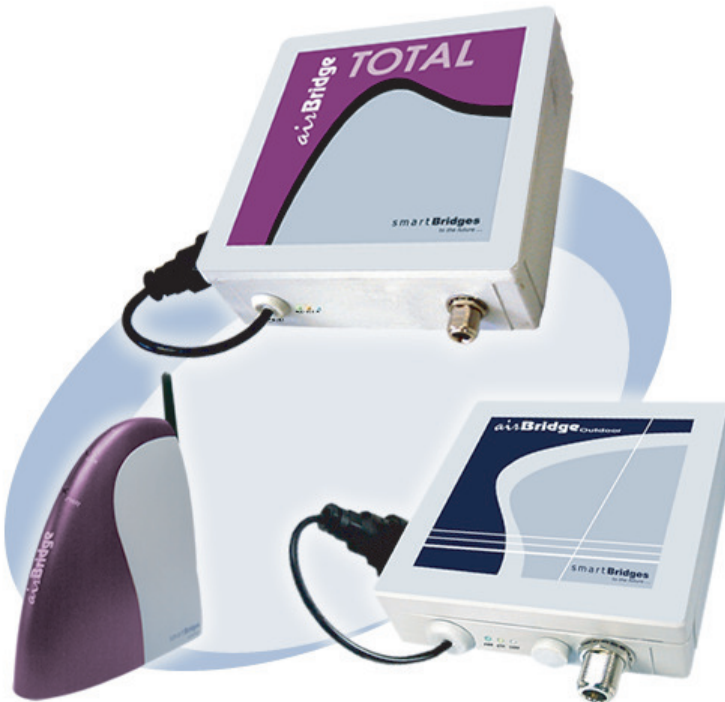


airBridge Series Wireless Ethernet Client Quick Install Guide Installing the airBridge Series

airBridge series is a wireless client which can be used to connect any PC with Ethernet port to a network / PC / Internet wirelessly. It is a simple plug and play device needing no configuration. It operates at 2.4 GHz ISM band. Using an external directional antennas for the airBridge outdoor can provide range of upto 32 Kilometers. It provides data rates upto 11Mbps and encryption capability of 64 bits or 128 bits. It can interface with any wireless LAN device complying with 802.11b specifications.

Currently there are 3 models in the airBridge series

1. airBridge - Indoor wireless ethernet client with a 2.2 dBi antenna
2. airBridge Outdoor - Outdoor wireless ethernet client device.
3. airBridge TOTAL - Outdoor wireless ethernet client device integrated with a 13 dBi / 9 dBi* flat panel antenna. Now with new enhancements like *Surge Protection* and an *external N connector* for an external antenna option.



Note:

- * 13dBi integrated antenna comply to FCC standards. 9dBi integrated antenna comply to ETSI standards.

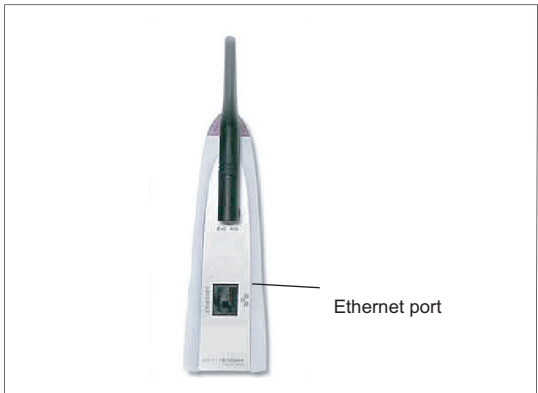
Contents of Package

airBridge	airBridge Outdoor	airBridge TOTAL
<ul style="list-style-type: none"> airBridge Unit powerShot AC Adapter External 2.2 dBi Antenna Ethernet Cable 1.5 meter long airBridge Setup Software and User Manual CD Quick Install Guide 	<ul style="list-style-type: none"> airBridge Outdoor Unit powerShot AC Adapter Pole Mounting Kit: U Bracket, Nuts, Washers Wall Mounting Kit: Wall plugs, Screws airBridge Setup Software and User Manual CD Quick Install Guide Coax Seal 	<ul style="list-style-type: none"> airBridge TOTAL Unit powerShot AC Adapter Pole Mounting Kit: U Bracket, Nuts, Washers Wall Mounting Kit: Wall plugs, Screws airBridge Setup Software and User Manual CD Quick Install Guide Earthing Tag for Grounding the TOTAL Coax Seal

Hardware Installation

for airBridge

- Insert the Power Jack into the powerShot & connect the AC Adapter to the mains wall outlet.
- Connect the RJ45 Ethernet cable from powerShot to PC.
- Connect the powerShot with airBridge.
- Verify that the PWR & ETH LEDs are ON.
- airBridge with its Factory Default Settings will associate with the nearby Access Point by itself. (indicated by steadyTxRx LED) airBridge is now ready for operation.



For airBridge Outdoor / TOTAL

Important note - Earthing Requirements:

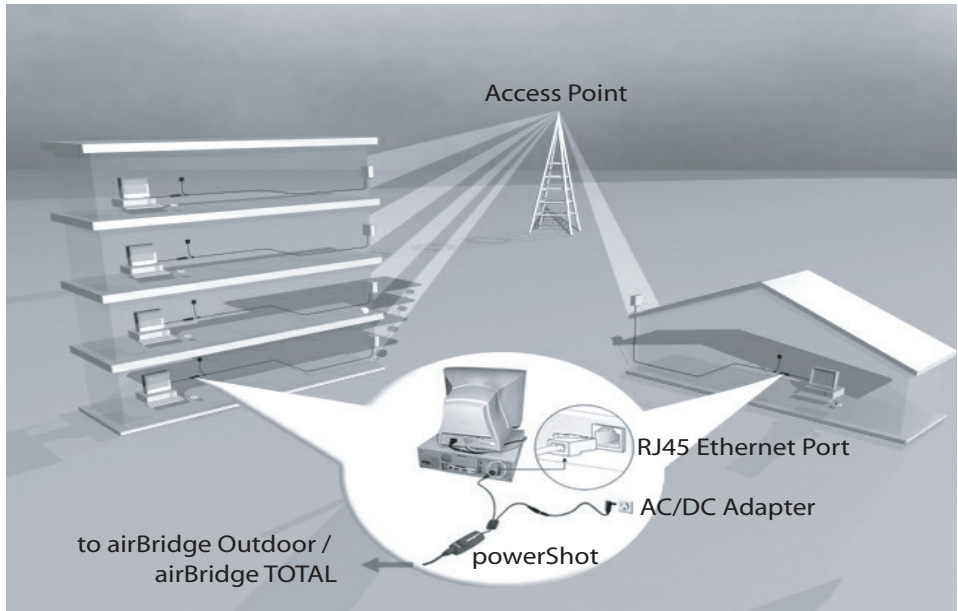
Follow National Electric Code NEC 810-20 and NEC 810-21 for this installation.

Rooftop Installation

The airBridge TOTAL can be mounted on the rooftop with the directional antenna pointing towards the Access Point. Connect a outdoor rated shielded CAT5 / CAT5e ethernet cable which carries power and data signals to airBridge Outdoor / airBridge TOTAL. Other end of the cable is connected to the PC through the powerShot. The AC adapter connected to the powerShot provides the power to the airBridge Outdoor / airBridge TOTAL.

Preparation of the Site:

The wireless waves propagate in straight lines. So it is essential that the antennas in the airBridge Outdoor / airBridge TOTAL and Access Point are in line of sight without any obstruction. Select the most appropriate place on the roof which will provide a direct view to the Access Point. Secure a 1.5 inch steel pipe vertically and insure that it cannot come



Mounting the airBridge Outdoor

Attach the airBridge Outdoor unit with the U bolts to the steel pipe. Make sure to tighten both top and bottom mounting plates to the pipe with U bolts, nuts and spring washers. Tighten the nuts so that the airBridge does not rotate on the pipe. The mounting should be such that the antenna socket, LED's, Ethernet Cable outlet etc face downward. The airBridge Outdoor is weather proof box made to NEMA 4 specs. There are no user adjustable parts inside and it is recommended that the unit is used in the same way it is shipped.

Mounting the Antenna:

Follow the mounting instructions provided by the antenna manufacturer and mount the antenna on the steel pipe. Antenna should be mounted on the same pipe as the airBridge Outdoor and positioned above it. The height of the antenna and direction should be in the direction of the Access Point. The antenna socket of the airBridge Outdoor and the antenna input have to be connected by an RG 8 N Male to N Male cable. Use the Coax Seal to seal the N Connector after fixing RG 8 Male cable. Prevent rain water entering the RF cable.



Mounting the airBridge TOTAL

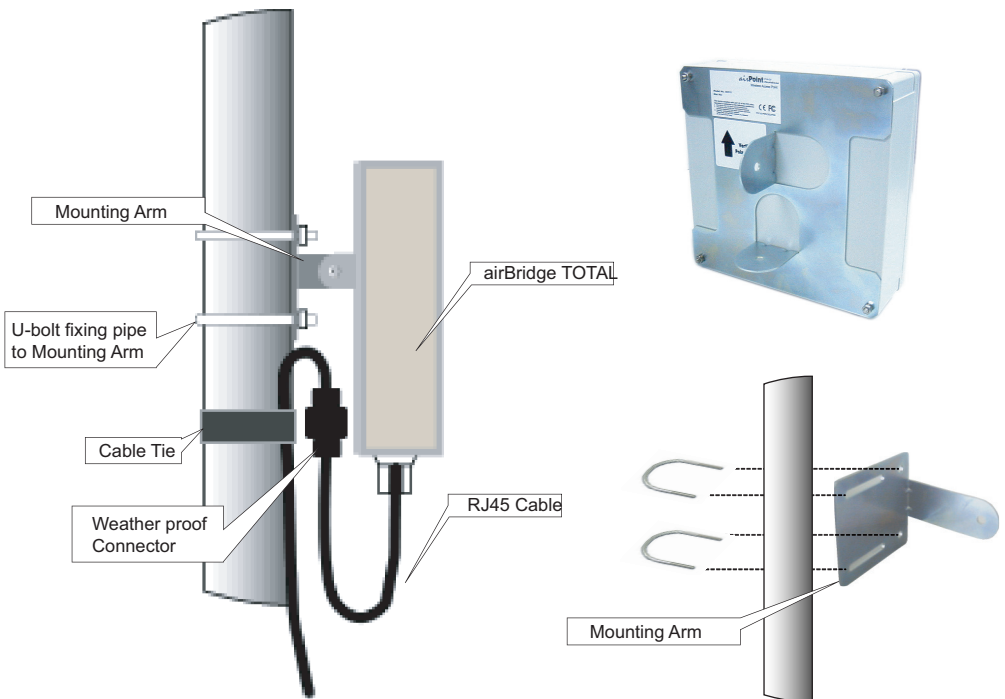
Fix the Bracket arm of the airBridge TOTAL unit with the 2pcs of U bolts to the mast. Make sure to tighten both top and bottom U bolts, with nuts and spring washers. Tighten the nuts so that the Bracket arm does not rotate on the mast. Use the internal external Toothed washer between cabinet bracket and mounting arm. Use the internal toothed washer with the nut to ensure that the TOTAL is tightly held in place.

The airBridge TOTAL has a high gain in-built directional antenna. Depending on the required signal polarity, use the correct fin for Vertical / Horizontal polarization. Please note that the vertical polarity is indicated on the backside of the device. Mount the unit on the Mounting arm with the 1/4" bolt, spring washer and nut and tighten.

Adjust the azimuth of the airBridge TOTAL unit by rotating the Mounting arm attached to the mast. Adjust the elevation / tilt angle of the airBridge TOTAL unit by rotating it around the fin.

Use the correct azimuth and the elevation angle to point the airBridge TOTAL unit towards the remote transmission tower.

Use the Antenna alignment mode in the simpleMonitor software to maximize the received signal strength for the unit.



Grounding:

The internal ground of the TOTAL is brought out to an earthing stud at the bottom side of the unit. Please crimp a 10 AWG wire to the earth tag and secure the earth tag onto the earthing stud tightly with the M6 nut provided. Ensure that the other end of the 10 AWG wire is grounded to the earth at the power ground of the premises.

Note: Grounding has to be done before mounting the TOTAL on wall / pole.

Cabling:

The airBridge TOTAL is terminated into a weatherproof RJ45 female connector for outdoor use. Refer to the cable and connector installation instructions supplied with the weatherproof connector for more information. The user can connect required length of suitable ethernet cable to connect the airBridge TOTAL to the user's PC / Network. RJ45 male connector is provided inside weatherproof connector for use with the ethernet cable from PC. We strongly recommend an outdoor rated shielded CAT5 / CAT5e cable to connect the TOTAL to the PC inside premises.

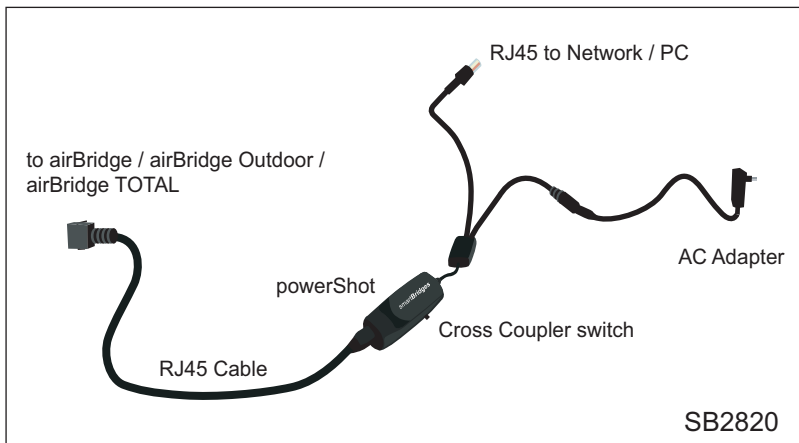
Note: The BBDN cable connected to TOTAL has minimum bending rating 50mm. Sharper bends will break the ground foil inside the cable.

Mounting the External Antenna for TOTAL:

Follow the mounting instructions provided by the antenna manufacturer and mount the antenna on the steel pipe. Antenna should be mounted on the same pipe as the airBridge TOTAL and positioned above it. The height of the antenna and direction should be in the direction of the Access Point. The antenna socket of the airBridge TOTAL and the antenna input have to be connected by an RG 8 N Male to N Male cable.

Wall mounting:

Use the supplied wall mounting plugs with screws and washers to mount the mounting arm directly on the wall instead of using U bolts to mount on a mast.



PC, powerShot Connection:

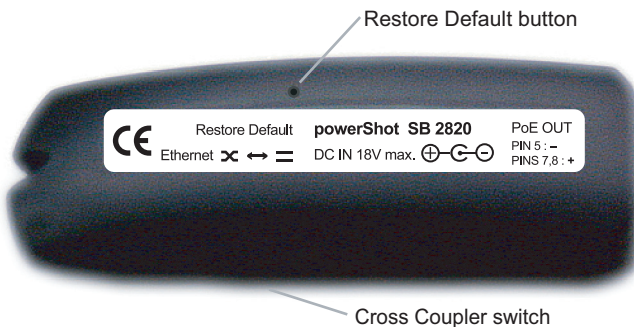
The powerShot has two input points and an outlet. One input is DC jack adaptable to the AC adapter output. This is a flying lead connector as shown in the diagram. Other input is RJ 45 Ethernet male connector with a short cable as shown in the diagram. This can be directly plugged into the ethernet signal port of the LAN or PC. There is an LED indicator on the injector indicating power is ON. The output port is RJ45 socket with DC power and is part of the casing itself. A standard RJ 45 male to male cable is provided as standard accessory to power injector to airBridge. When the user wants to use a longer cable to position airBridge at a distance, the user is advised to use a standard RJ 45 cable (CAT 5 cable) with 8 wires.

Cross coupler switch in SB2820 powerShot selects straight or crossed ethernet connection.

For cable lengths in excess of 50 meters it is recommended that the AC adapter should be of 18 Volt type. Normally 12 Volt AC adapter is provided with the airBridge.

Note:

Restore Default button at the bottom side of the powerShot should be used to restore the device back to factory / WISP defaults.



Software Installation

System Requirements

Computer with Windows 98/ME/NT/2000/XP supporting ethernet connectivity

Installing airBridge setup Software:

Please insert the Setup Software CD into the CD-ROM drive of your PC. The CD will run automatically. If it doesn't autorun, please browse the CD and double click on **index.htm**.

- Select the appropriate product from the drop-down list and click the **Go** button.
- Click on the **Setup File** link. You should see the **File Download** dialog box.
- Select **Open** or **Run this program from its current location** to start the setup.
- The setup will install all the necessary files in the "C:\Program Files\smartBridges\airBridge" directory.
- The installation will create the shortcuts in your Program Menu at smartBridges\airBridge for easy accessibility of Setup software.
 - Firmware upgrade utility allows upgrading of firmware.
 - simpleMonitor allows configuration of the airBridge.
 - User Guide shows the User Guide in HTML form.
 - Web Register opens the product registration of airBridge on smartBridges website.
 - Known Issues with the Software, Firmware and Hardware.
 - Uninstall the Setup Software.
- After Installing please restart the PC if asked.

Uninstalling airBridge Setup Software:

Click on the shortcut "**Start > Programs > smartBridges > airBridge > Uninstall airBridge**" and it will uninstall the setup software from your PC.

Note:

airBridge, airBridge Outdoor and airBridge TOTAL can be configured using the same software which is referred to as airBridge.

Configuring the airBridge

For Windows 98 / ME / NT / 2000 / XP

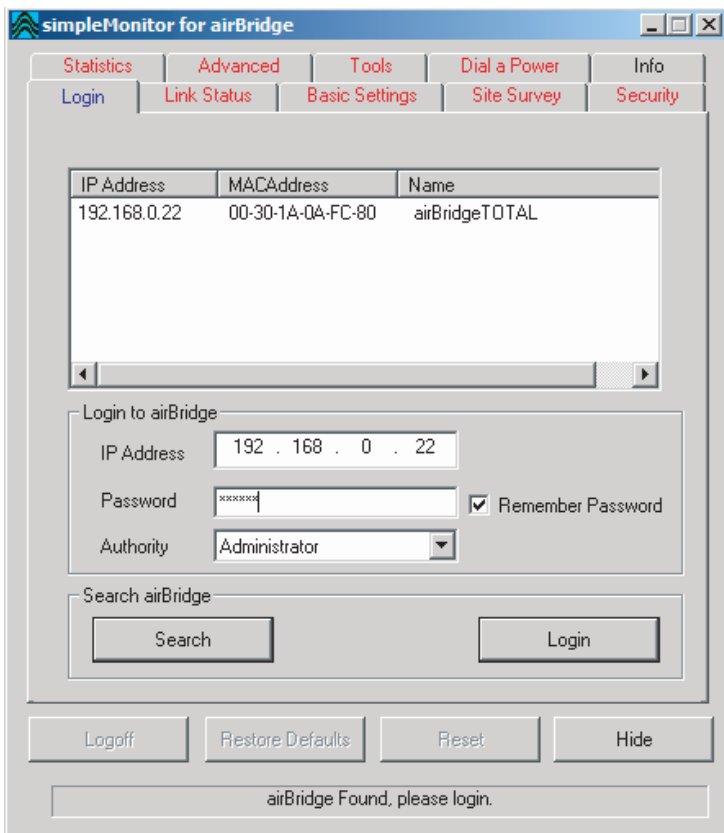
The factory default parameters for the airBridge are

- IP Address : 192.168.0.22
- Subnet Mask : 255.255.255.0
- Gateway : 0.0.0.0
- Administrator Password : public (case sensitive)
- User Password : public (case sensitive)
- Authentication Type : open key
- WEP Keys : None
- WEP Algorithm : Disabled
- ESSID : Any
- BSSID : 000000000000
- Preamble : Long
- Operating Channel : Country Specific
- Regulatory Domain : Country Specific
- Configuration Port : Both
- Primary DHCP Port : Wireless

Login

- Connect the airBridge to the Network Card's RJ45 connector using the given cable.
- Make sure the power to the airBridge is **ON**.
- Start the simpleMonitor by clicking on the shortcut: **Start > Programs > smartBridges > airBridge > airBridge simpleMonitor**.
- Click on **Search** button.
- If the login parameters are correct, you will get the message: "Successfully read the airBridge Configuration".

In case of a successful connection to the airBridge, simpleMonitor acknowledges by enabling all the tabs.



Security

- By default encryption is disabled which means the communication is not secure. In case you want to have a secure communication, ensure that the WEP encryption setting for airBridge are the same as that of Access Point.
- To set the encryption keys click on security tab:
 - Select the Encryption Key(64Bit/128Bit).
 - Enter Hex data.
 - Select the desired key to be used(Default Key).
 - Save the WEP Keys....
 - You will get a pop up window with the message "WEP Encryption Keys Saved Successfully".

Note:

Recommended format is HEX format. In case other devices used along with smartbridges products need only ASCII based encryption, please use the ASCII to HEX table. See appendix A.

The screenshot shows the 'simpleMonitor for airBridge' application window with the 'Security' tab selected. The window contains the following elements:

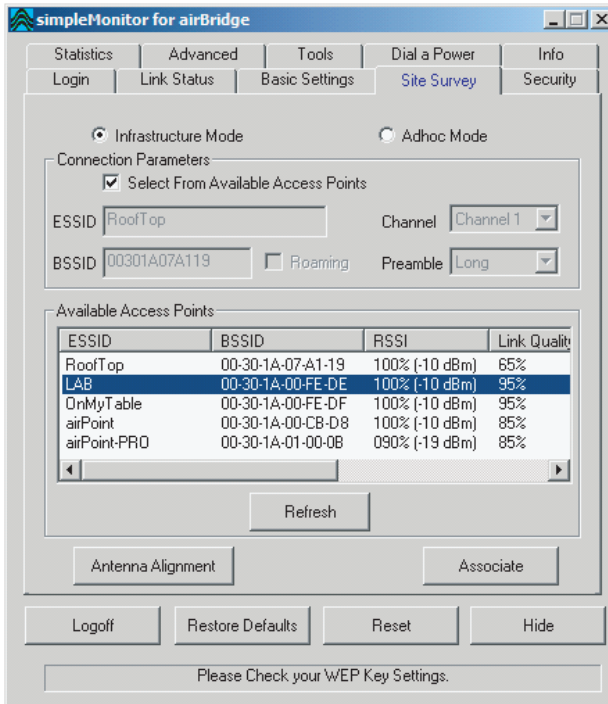
- Navigation Tabs:** Statistics, Advanced, Tools, Dial a Power, Info, Login, Link Status, Basic Settings, Site Survey, Security (selected).
- WEP Encryption keys (HEX):**
 - Radio buttons for 64 bit (selected), 128bit, and Disable.
 - Four text input fields for Key 1, Key 2, Key 3, and Key 4, each with a character set indicator (0-9, a-f, A-F). Key 3 contains the value 'a1b2c3d4e5'.
 - A 'Default Key' dropdown menu currently showing 'None', with a list of options: None, Key 1, Key 2, Key 3 (highlighted), and Key 4.
 - A 'Save WEP Keys' button.
- Community Password:**
 - Fields for 'New Password' and 'Confirm Password'.
 - Radio buttons for 'Administrator' (selected) and 'User'.
 - A 'Set Password' button.
- Footer Buttons:** Logoff, Restore Defaults, Reset, Hide.
- Status Bar:** A message box at the bottom reads 'Successfully Read the airBridge Configuration.'

Site Survey

- Click on Site Survey tab:
 - □ Select Infrastructure Mode
 - □ Check **Select From Available Access Point**.
 - □ Double click on the desired Access Point.
 - You will see the message "Device is successfully Associated..."
- Use antenna alignment tool while adjusting the antenna to get better link.
- The RSSI values are shown in dBm in the dialog box as per the internal formula. If you want specific values to be shown in there, please store them in the table and set the option as "User Defined" from Advanced TAB.
- The TxRx LED will be lighted after successful association.
- If airBridge fails to associate, Please ensure that the WEP key settings for airBridge as well as the desired Access Point are the same and airBridge is authorized to associate with the desired Access Point.

Note:

Alternatively, if the desired access point does not appear in the available list the ESSID, BSSID, Channel and the Preamble of a particular access point can be entered manually if you want to associate with it. This can be done by unchecking the 'Select from Available Access Points'. Please make sure that you are not using ESSID as "Any" in ADHOC Mode. This is especially reserved for infrastructure Mode only.



Advanced

- Change default values of Regulatory Domain & operational channel:
 1. Select appropriate Regulatory Domain from Drop Down List.
 2. Select appropriate Channel from the Channel Drop Down List, click on **Set Default Config** button to change the default settings for **Regulatory Domain** and **Channel**.
 3. Specify appropriate values for **Fragmentation** and **RTS Threshold** (refer to user guide for more details).
 4. Select **authentication type** from drop down list.
 5. Select the appropriate port for getting the lease from the DHCP server and the default gateway. Select either ethernet or wireless port.
 6. You can select both ethernet as well as wireless as configuration port. This will enable device configuration from the LAN or wireless side.
 7. Specify DHCP TimeOut option. By enabling the DHCP Timeout airBridge will search for DHCP Server for 1 min after boot-up (if DHCP is enabled in IP Settings) and if it doesn't get the lease it will fall back to previously obtained IP Address. If you want airBridge to search for DHCP Server till it obtains the lease, disable this option. (This option is supported from F/W Ver 0.01.09 onwards).
 8. Click on set configuration button to save these parameters.

Transmission and Reception Antenna:

Allows the user to select between Antenna A and Antenna B for reception of signals. Diversity options will select the Antenna with best possible signal reception sensitivity (recommended) if additional antenna is connected.

airBridge Outdoor:

1. Antenna A - Internal Antenna (this is not used)
2. Antenna B - External Antenna

airBridge TOTAL:

1. Antenna A - Internal Antenna (here the 9dBi or 13dBi Antenna is used)
2. Antenna B - External Antenna (provision is made with N Type connector)

Authentication Type:

The authentication type defines configuration options for the sharing of wireless networks to verify identity and access privileges of roaming wireless network cards. Select Open System or Shared Key Authentication Type or Both:

- **Open System:** With this setting any station in the WLAN can associate with an Access Point and receive and transmit data (null authentication).

This default setting allows a device, regardless of its WEP keys, to authenticate and then attempt to communicate with another device. If the bridge is using WEP and the other device is not, the other device can authenticate with the bridge but cannot communicate.

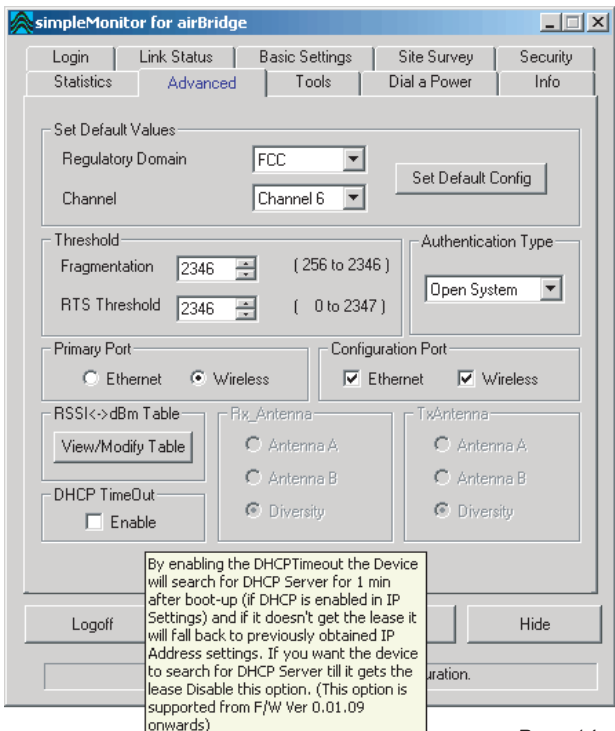
- **Shared Key:** With this setting only stations using a shared key encryption identified by the Access Point are allowed to associate with it. The bridge sends an unencrypted challenge text string to any device attempting to communicate with the bridge. The device requesting authentication encrypts the challenge text and sends it back to the bridge. If the challenge text is encrypted correctly, the bridge allows the requesting device to authenticate. Both the unencrypted challenge and the encryption challenge can be monitored, however, which leaves the bridge open to attack from an intruder who guesses the WEP key by comparing the unencrypted and encrypted text strings. Because of this weakness, Shared Key authentication can be less secure than Open authentication.
- **Both:** Open and Shared Key supported.

Note:

The Authentication type must be the same on the airBridge and on the Access Point. All WEP keys on the airBridge must be the same as those on the Access Point with which the airBridge is associated.

Important:

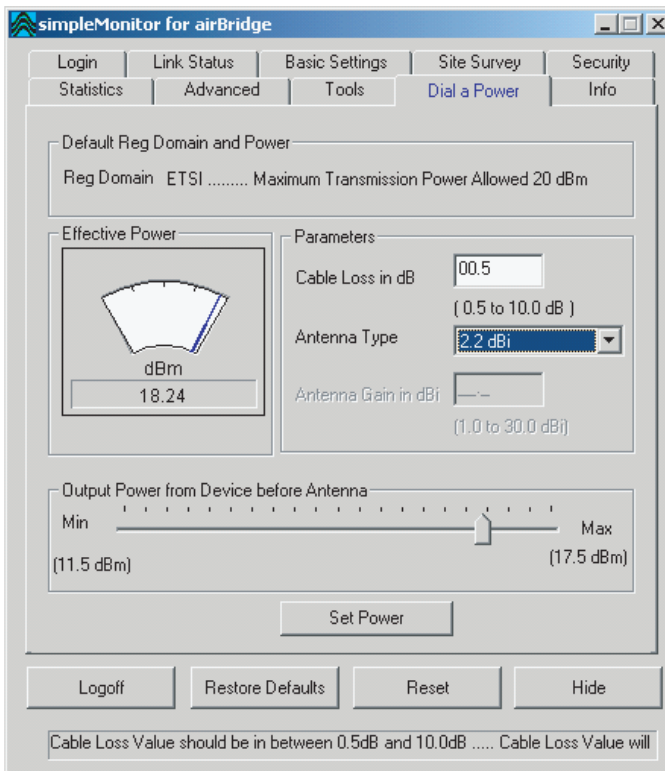
The default setting is internal antenna (Antenna A) shipping condition, whenever an external antenna is connected, change the selection to Antenna B.



Dial-A-Power

This feature of airBridge allows the user to control the radio transmit power of the airBridge from the simpleMonitor software. Make use of the user interface controls in this Tab to adjust the radio transmit power. Dial a Power facility is available only if you login as Administrator.

1. Select the antenna connected to airBridge from Antenna Type drop down list, if you happen to select the Custom Antenna, please enter the Valid Gain. The limit is 1.0 dBi to 30.0 dBi.
2. Specify Cable Loss value in the Edit box. The limits for this value are min 0.5 dB, max 10.0 dB.
3. Use slider control to adjust EIRP Output power from the airBridge. As you move the slider pointer, observe that EIRP Output power is displayed in Effective output Power Display.
4. The Effective Power is calculated as equal to airBridge output Power(dBm) - Cable Loss(dB) + Antenna Gain(dBi).
5. Click **Set Power** button. This will change the radio transmit power of the airBridge unit. A message will be displayed after successful completion of this operation.



Restore Factory Default Settings

If you forget the critical settings like WEP or Administrator Password of the airBridge, you can restore the airBridge to the Factory Default Settings as,

1. Make sure that the Power to the airBridge is ON. (indicated by PWR LED)
2. Locate and Press the **Restore Default** button continuously. (The **Restore Default** button is located on the back of powerShot.)
3. The TxRx LED will dim its light intensity for few seconds.
4. Release the button after the TxRx LED restores back to its original bright intensity.
5. After restoring the Factory Default Settings, please configure the airBridge again.

Appendix A

ASCII to Hexadecimal Conversion Table

A	41	L	4C	W	57	h	68	s	73	3	33
B	42	M	4D	X	58	i	69	t	74	4	34
C	43	N	4E	Y	59	j	6A	u	75	5	35
D	44	O	4F	Z	60	k	6B	v	76	6	36
E	45	P	50	a	61	l	6C	w	77	7	37
F	46	Q	51	b	62	m	6D	x	78	8	38
G	47	R	52	c	63	n	6E	y	79	9	39
H	48	S	53	d	64	o	6F	z	7A		
I	49	T	54	e	65	p	70	0	30		
J	4A	U	55	f	66	q	71	1	31		
K	4B	V	56	g	67	r	72	2	32		

Operating Temperature Range

airBridge : 0 °C ~ +50 °C (+32 °F ~ +122 °F)
 airBridge Outdoor / TOTAL : -40 °C ~ +65 °C (-40 °F ~ +150 °F)
 Ingress Specification : IP65 for airBridge Outdoor / TOTAL

Products and model numbers

sB2100 airBridge™ Indoor FCC and CE versions
 sB2110 airBridge™ Outdoor FCC and CE versions
 sB2120 airBridge™ TOTAL FCC version 13 dBi antenna
 sB2125 airBridge™ TOTAL CE version 9 dBi antenna

Note:

Please refer to the User Guide found on the Setup CDROM for detailed and additional information.

For the latest Quick Install Guide and software updates, please visit our support webpage at
<http://www.smartbridges.com/support/>